



Worktop extension –
add extra working surface in seconds.



pull-out



swing-up



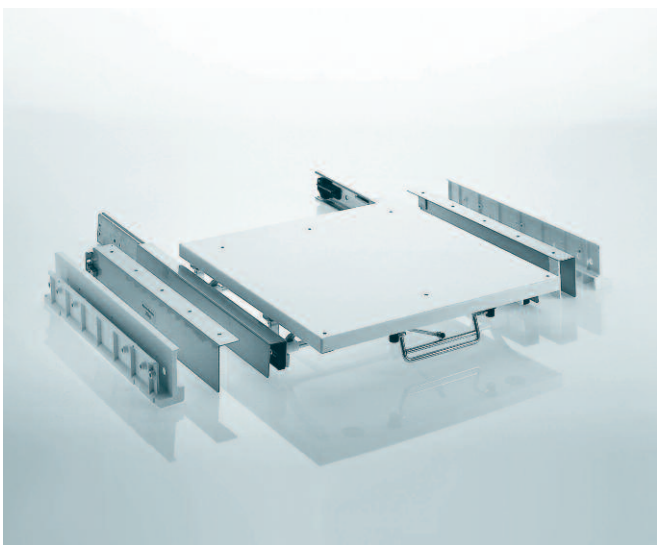
arrest



Same level as the worktop: Additional space!



release



Art. no. Dimensions (mm)

00 5124

inside width:
562/568

inside depth:
min. 500

inside height:
min. 125

Worktop extension

without table-top
dimensions for table top:

555 x 460

thickness of table top: 15-19 mm

load capacity: 20 kg
extension: 585 mm